

tidal pools

seagull

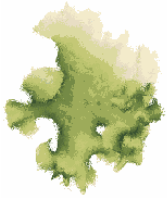


worm

-segmented body with no legs



seaweed



sea lettuce



kelp

sea anemone



fish



goby



lion fish



blenny

molluscs

- invertebrates with soft unsegmented bodies
- most with an external shell
- some with an internal 'shell' (octopus and squid)
- a few with no shell (slug)



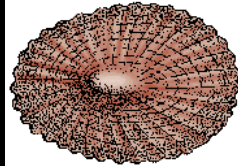
periwinkle



mussel



chiton



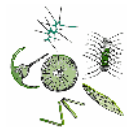
limpet



octopus

plankton

-tiny organisms that float in the sea and provide food for many sea animals



plant plankton



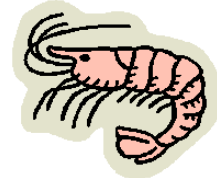
animal plankton

crustaceans

-invertebrates with a thick outer shell and jointed legs



crab



shrimp



sandhopper



sea slater



barnacle



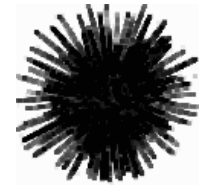
hermit crab

echinoderms

-star-shaped sea invertebrates with a brittle skin



starfish



sea urchins